

Failure of Formation

Complete Agenesis

Results in complete absence of the vagina, cervix, uterus and fallopian tubes.

Partial Agenesis

Results a range of anomalies, including absence of the upper vagina and cervix with persistence of the uterus and fallopian tubes, or the more common **unicornuate uterus** and single fallopian tube.

Failure of Fusion

Didelphys

There may be complete duplication of the internal genitalia (two uteri, two cervixes, two vagina), but less dramatically is the

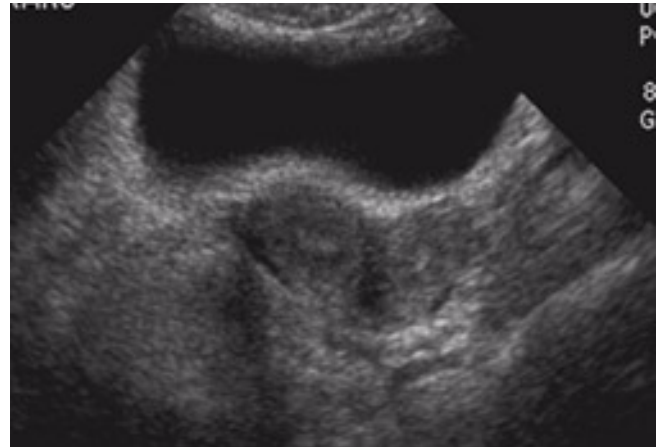
Bicornuate Uterus

A single vagina and cervix, but variable lack of fusion of the upper uterine cavity.

Failure of Dissolution

The median septum fails to dissolve after fusion of the separate mullerian ducts, and results in **septate uterus**, with a single vagina and cervix, but an intrauterine septum partially or completely separates the cavity into two hemiuteri.

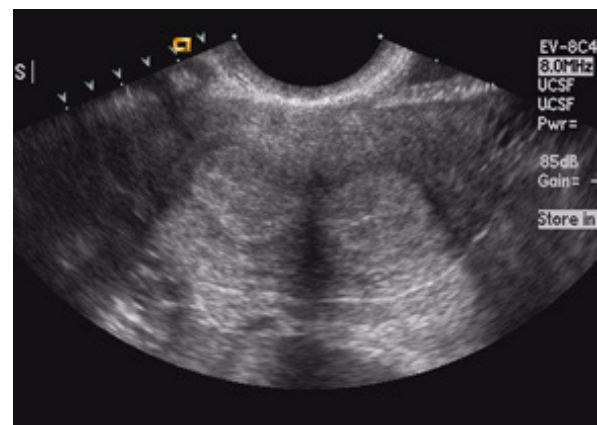
Rarely, there may be a combination of failure of fusion and failure of dissolution, which results in vaginal duplication with two cervixes, and a single uterus with a septum.



uterus didelphys



bicornuate uterus



septate uterus